

WINDSORCARE COTTAGES

COTTAGES WITH GARAGES

INDICATIVE ROOM SIZES

LIVING	3900mm x 5700mm
KITCHEN	2600mm x 3500mm
FOYER	3900mm x 1900mm
BATHROOM	2400mm x 2600mm
MASTER BATHROOM	3300mm x 3900mm
BEDROOM 2	3300mm x 3100mm
GARAGE	3500mm x 5900mm

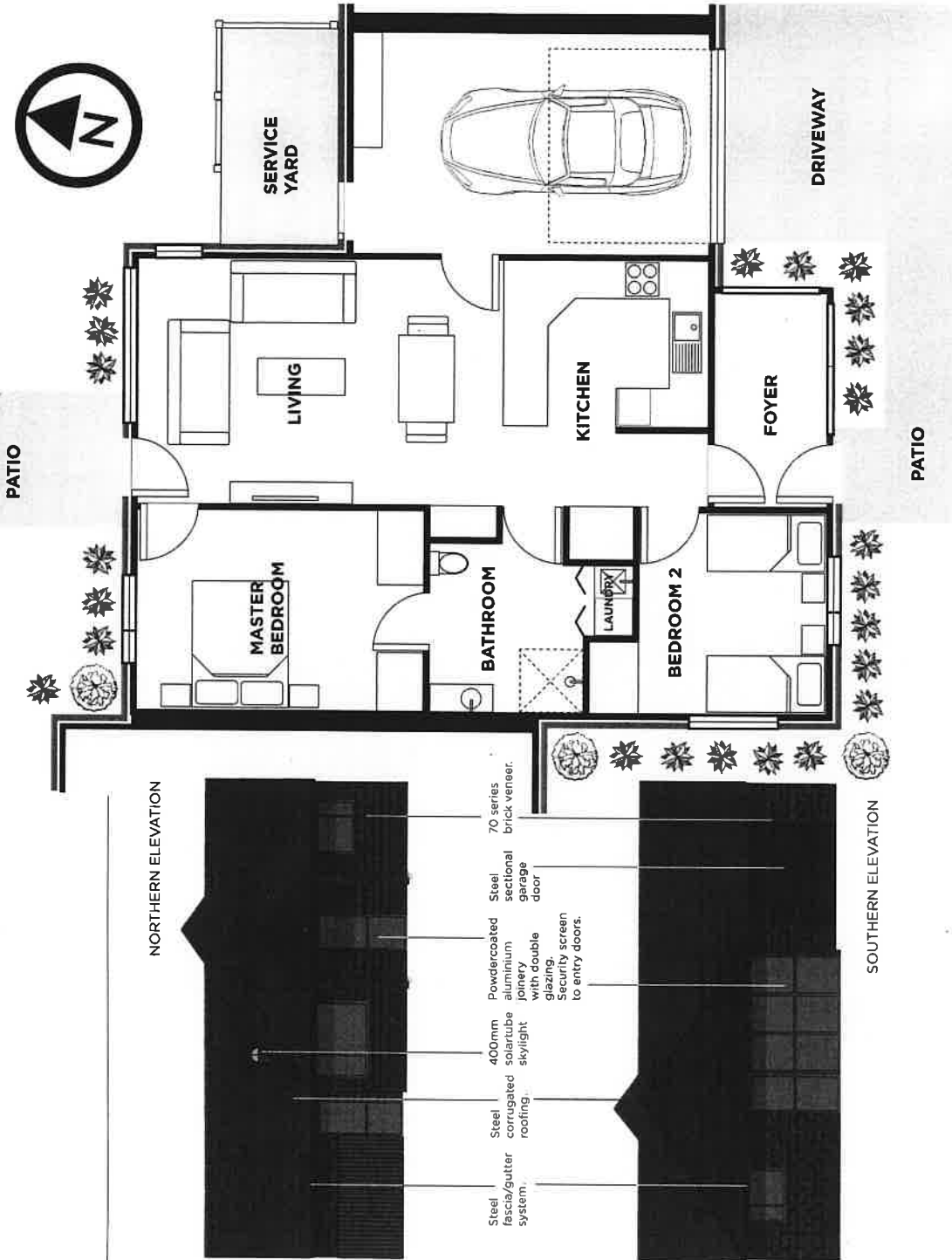
TOTAL FLOOR AREA
100 - 110sqm

SPECIFICATION FOR EACH COTTAGE

- Corrugated roofing
- Brick veneer external walls
- Double glazed aluminium windows and doors
- Wheelchair accessible
- Insulated concrete floor
- Private service yard
- Insulated walls [R2.6] and ceiling [R3.6]
- Painted plasterboard walls and ceilings
- Vinyl floor coverings in kitchens and bathrooms
- Carpet in living and bedrooms
- Painted flush panel internal doors
- Level entry shower
- Mirror with demister and heater towel rail in bathroom
- Sectional garage door with automatic openers
- Heat pump
- MATV / Nursecall / telephone to each unit

APPLIANCES

- Wall oven
- Ceramic hob
- Single drawer dishwasher
- Fridge/freezer
- Microwave
- Food waste disposer
- Washing machine
- Clothes dryer



NORTHERN ELEVATION

SOUTHERN ELEVATION